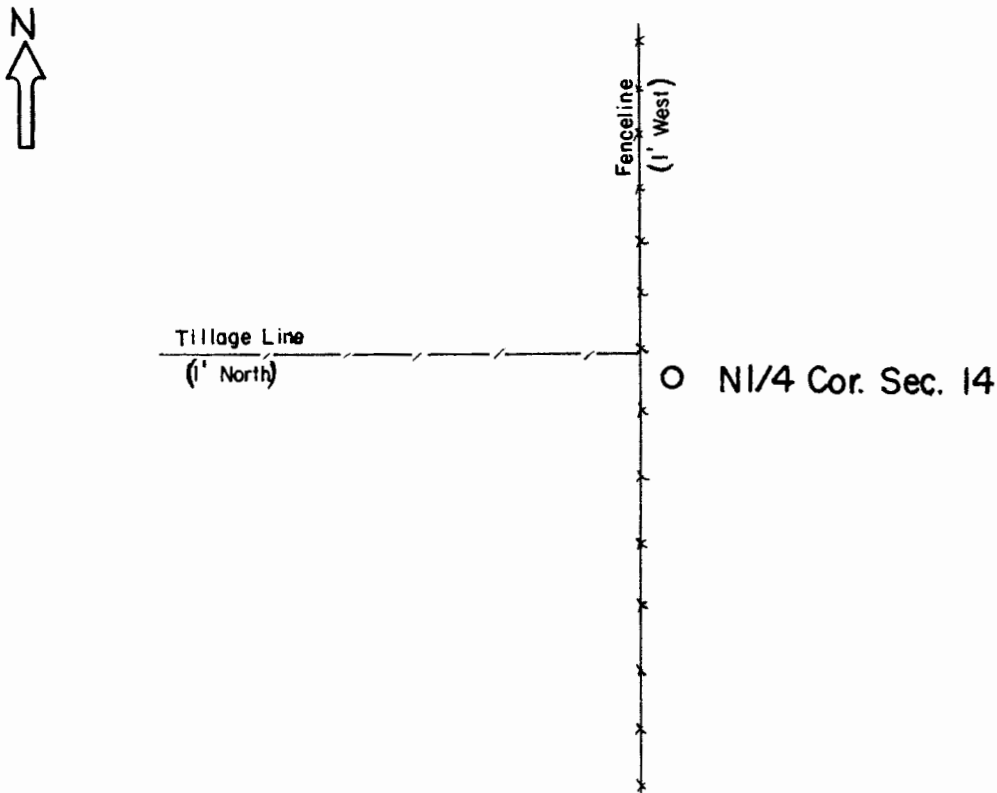


**CERTIFICATE OF LOCATION OF GOVERNMENT CORNER**

**North Quarter** Corner of Section **14** , Township **107** , Range **41** 5th P.M.  
STATE OF MINNESOTA, County of Murray.

**Statement:** Aug. 29, 1989 - Probed area around corner fence posts. Placed a Minnesota Department of Transportation cast iron monument by proportionate measure.

SKETCH OF REFERENCE TIES



Statement of evidence relative to this corner location is on the back of page.

I hereby certify that this document and the data contained herein was prepared by me or under my direct supervision and that I am a duly Registered Land Surveyor under the laws of the State of Minnesota.

*Duane A. Bonnema*  
Duane A. Bonnema      Nov 6, 1989  
Date

Minnesota Registration No. 14895

OFFICE OF THE COUNTY RECORDER  
COUNTY OF MURRAY      **NOV 15 1989**

I hereby certify that this document was filed in the County Recorder's office at \_\_\_M. on the \_\_\_ day of \_\_\_\_\_ A.D., 19\_\_

County Recorder *James V. Johnson*

By \_\_\_\_\_, Deputy  
DOCUMENT NO. \_\_\_\_\_

**North Quarter Cor. Sec. 14 T107N-R41W**

**Statement:**

*August 1861*

*Original Government Land Office Surveyor L. G. M. Fletcher records in his field notes, "Built mound with trench pits, charred stake, per instructions."*

*Sept. 29, 1989*

*Duane A. Bonnema, LS Reg. No. 14895, probed an area around the fence corner location. It appears that no corner stone is present. Placed a Minnesota Department of Transportation cast iron monument by single proportionate measure between the section corners 1/2 mile East and West.*